



# CHARACTERISTICS & FUNCTIONALITIES

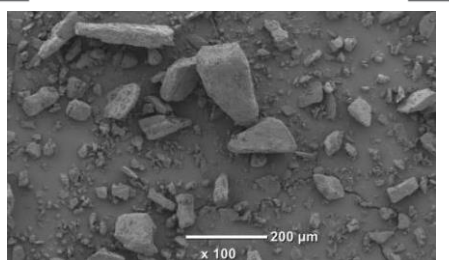
**LACTOSE**  
MONOHYDRATE

**150**  
**MESH**

## DESCRIPTION

**ARMOR PHARMA™ lactose monohydrate 150M** is a milled powder of  $\alpha$ -lactose monohydrate. This lactose is produced in ARMOR PHARMA™ dedicated & state-of-the-art facility in Loudéac (France). Manufactured under EXCIPACT™ GMP standards, it conforms to Ph.Eur, USP-NF and JP lactose monohydrate monographs.

SEM (Scanning Electron Microscopy)



### KEY BENEFITS

- **Compaction properties**
- Blending properties
- Storage stability

### APPLICATIONS

- **Wet granulation**
- **Dry granulation**
- Blends/Premixes/Triturations
- Fermentation processes

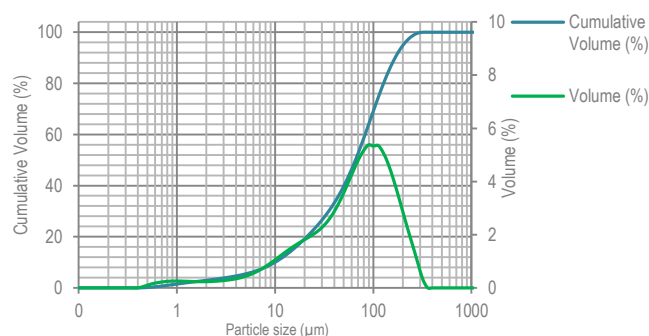


## PARTICLE SIZE DISTRIBUTION (PSD)

PSD (Air jet sieve)	Specifications (%)
% < 45 $\mu\text{m}$	$\leq 50$
% < 100 $\mu\text{m}$	$\geq 70$
% < 150 $\mu\text{m}$	$\geq 85$
% < 315 $\mu\text{m}$	$\geq 97$

Due to the presence of milled particles, this  $\alpha$ -lactose monohydrate combines good compaction and blending properties.

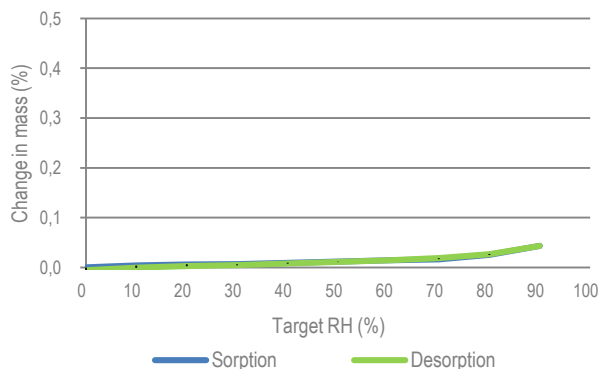
PSD (Malvern Laser diffraction, indicative values)



$x_{10}$  : 10  $\mu\text{m}$      $x_{50}$  : 66  $\mu\text{m}$      $x_{90}$  : 166  $\mu\text{m}$

## MOISTURE SORPTION

DVS (Dynamic Vapor Sorption)



The hygroscopicity of  $\alpha$ -lactose monohydrate is very low which enables high stability both in storage as well as in formulations

## FLOWABILITY

- **POURED DENSITY:** 0.59 g/mL
- **TAPPED DENSITY:** 0.86 g/mL
- **CARR'S INDEX:** 31 %
- **HAUSNER RATIO:** 1.45

How would you **like** your lactose?

The data contained in this document are for information purposes only and are non-contractual.  
For more information, contact us: [contact@armor-pharma.com](mailto:contact@armor-pharma.com)