



CHARACTERISTICS & FUNCTIONALITIES

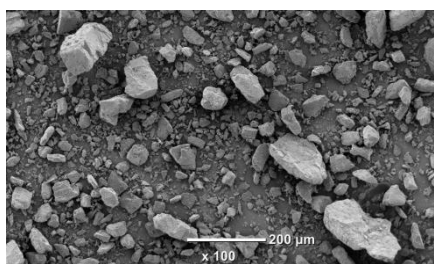
LACTOSE
MONOHYDRATE

350
MESH

DESCRIPTION

ARMOR PHARMA™ lactose monohydrate 350M is a fine milled powder of α -lactose monohydrate. This lactose is produced in ARMOR PHARMA™ dedicated & state-of-the-art facility in Loudéac (France). Manufactured under EXCIPACT™ GMP standards, it conforms to Ph.Eur, USP-NF and JP lactose monohydrate monographs.

SEM (Scanning Electron Microscopy)



KEY BENEFITS

- Compaction properties
- Blending properties
- Storage stability

APPLICATIONS

- Wet granulation
- Dry granulation
- Blends/Premixes/Triturations
- Fermentation processes

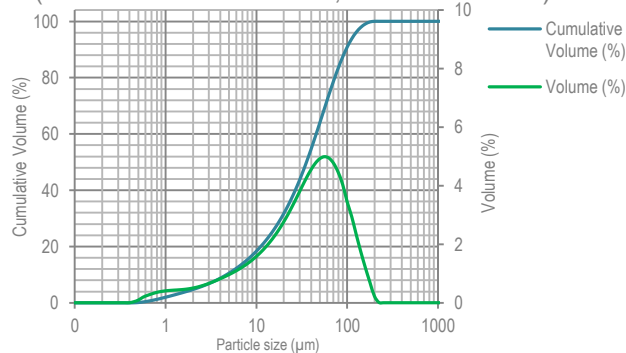


PARTICLE SIZE DISTRIBUTION (PSD)

PSD (Air jet sieve)	Specifications (%)
% < 45 μm	≥ 60
% < 100 μm	≥ 96
% < 250 μm	100

Due to the presence of fine milled particles, this α -lactose monohydrate combines good compaction and blending properties.

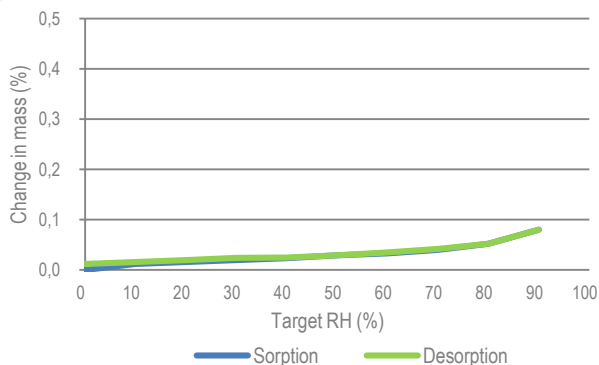
PSD (Malvern Laser diffraction, indicative values)



x_{10} : 5 μm x_{50} : 36 μm x_{90} : 97 μm

MOISTURE SORPTION

DVS (Dynamic Vapor Sorption)



The hygroscopicity of α -lactose monohydrate is very low which enables high stability both in storage as well as in formulations

FLOWABILITY

- POURED DENSITY: 0.52 g/mL
- TAPPED DENSITY: 0.79 g/mL
- CARR'S INDEX: 34 %
- HAUSNER RATIO: 1.52

How would you **like** your lactose?

The data contained in this document are for information purposes only and are non-contractual.
For more information, contact us: contact@armor-pharma.com