



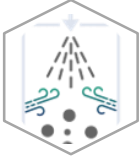
CHARACTERISTICS & FUNCTIONALITIES

EXCIPRESS™

SD 2L



DESCRIPTION

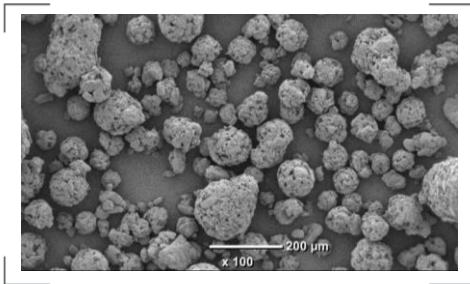


EXCIPRESS™ SD2L is a Spray-Dried lactose typically used for Direct Compression. It is manufactured under GMP standards and conforms to Ph.Eur, USP-NF and JP lactose monohydrate monographs.

Spray-dried lactose consists of fine primary lactose particles bound in a matrix of amorphous lactose.

- It combines :
- high compaction properties of fine lactose crystals and amorphous lactose
 - very good flowability of spherical particles.

SEM (Scanning Electron Microscopy)



KEY BENEFITS

- **Excellent compaction properties**
- **Very good flowability**
- **Very good blending properties**
(Low dose formulations)

APPLICATIONS

- **Direct compression**
Tablets
Effervescent tablets
- **Hard capsules, sachets**

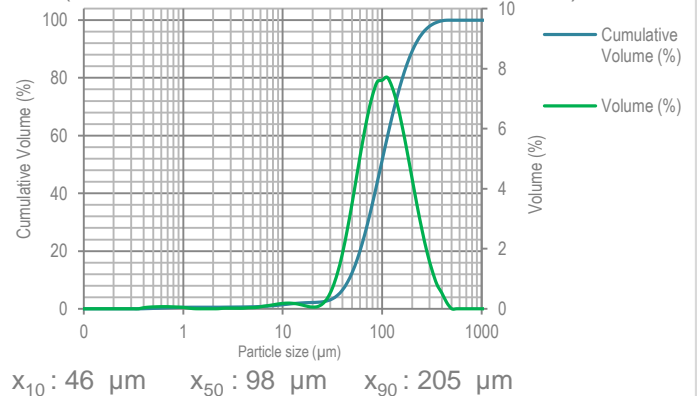


PARTICLE SIZE DISTRIBUTION (PSD)

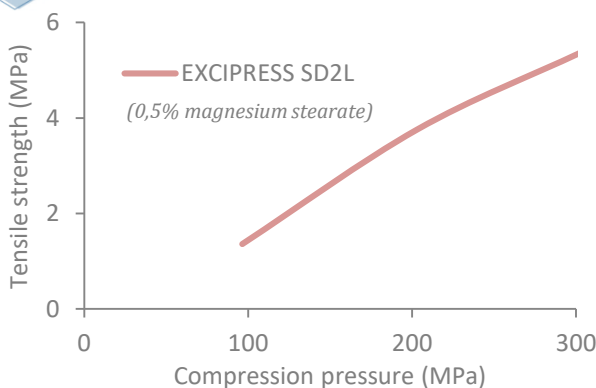
PSD (Air jet sieve)	Specifications (%)
% < 45 µm	≤ 15
% < 100 µm	30 – 65
% < 250 µm	≥ 95

Spray-dried process gives spherical particles that flow very well.

PSD (Malvern Laser diffraction, indicative values)



TABLETABILITY



EXCIPRESS™ SD2L exhibits excellent compaction properties.

It is an excipient of choice for Direct Compression formulations.



FLOWABILITY

According to flowability index measured by Flodex, EXCIPRESS™ SD2L exhibits a "very good" flowability.

- **POURED DENSITY:** 0.62 g/mL
- **TAPPED DENSITY:** 0.69 g/mL
- **CARR'S INDEX:** 10 %
- **HAUSNER RATIO:** 1.11

How would you **like** your lactose?

The data contained in this document are for information purposes only and are non-contractual.
For more information, contact us: contact@armor-pharma.com